

Vintertävling / Talvikisa 2021



Oil Pattern Distance:	41 Feet	Reverse Brush Drop:	37 Feet	Oil Per Board:	35 uL
Forward Oil Total:	10.01 mL	Reverse Oil Total:	9.52 mL	Volume Oil Total:	19.53 mL
Forward Boards Crossed:	286 Boards	Reverse Boards Crossed:	272 Boards	Total Boards Crossed:	558 Boards

	Start	Stop	Loads	Speed	Crossed	Start	End	Feet	T.Oil
1	2L	2R	3	10	111	0.0	2.8	2.8	3885
2	8L	8R	1	14	25	2.8	4.7	1.9	875
3	9L	9R	1	14	23	4.7	6.6	1.9	805
4	10L	10R	2	14	42	6.6	10.5	3.9	1470
5	11L	11R	2	18	38	10.5	15.6	5.1	1330
6	12L	12R	1	18	17	15.6	18.1	2.5	595
7	13L	13R	2	18	30	18.1	23.2	5.1	1050
8	2L	2R	0	22	0	23.2	32.0	8.8	0
9	2L	2R	0	30	0	32.0	41.0	9.0	0

Navigation: Forward Reverse More

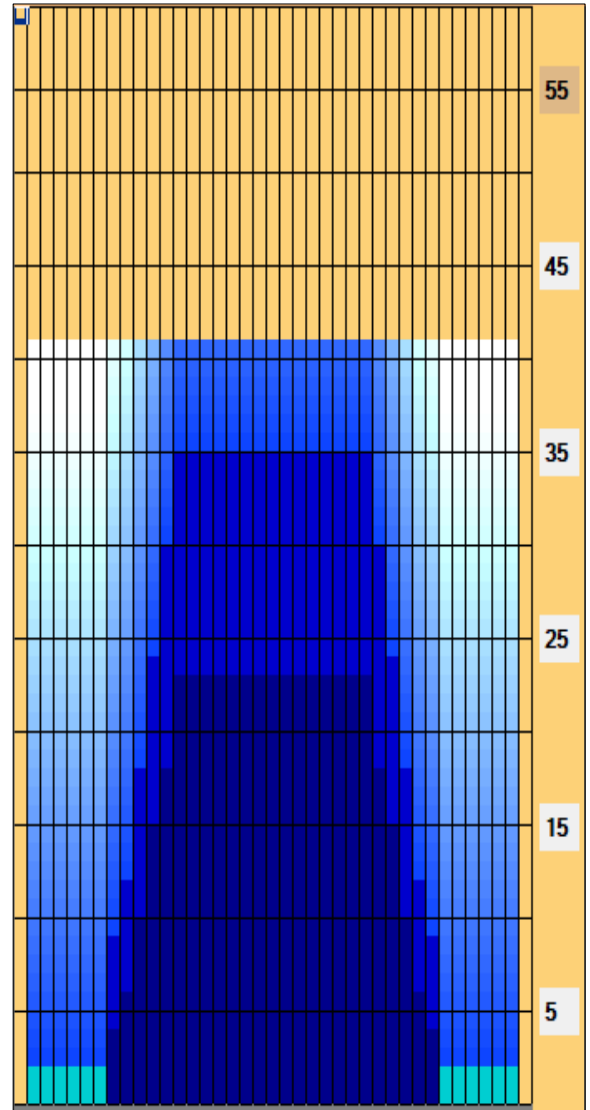
	Start	Stop	Loads	Speed	Crossed	Start	End	Feet	T.Oil
1	2L	2R	0	30	0	41.0	35.0	-6.0	0
2	13L	13R	2	18	30	35.0	29.9	-5.1	1050
3	12L	12R	3	14	51	29.9	24.0	-5.9	1785
4	11L	11R	3	14	57	24.0	18.1	-5.9	1995
5	10L	10R	3	14	63	18.1	12.2	-5.9	2205
6	9L	9R	2	10	46	12.2	9.4	-2.8	1610
7	8L	8R	1	10	25	9.4	8.0	-1.4	875
8	2L	2R	0	10	0	8.0	0.0	-8.0	0

Navigation: Forward Reverse More

Conditioner:
Type In or Select One

TransferType:
Type In or Select One

- Forward
- Reverse
- Combined
- Buff



This Pattern Up Loaded From Slot # 20 In Lane Machine On 23-12-2020 14:47

Item Description	3L-7L:18L-18R Outside Track:Middle	8L-12L:18L-18R Middle Track:Middle	13L-17L:18L-18R Inside Track:Middle	18L-18R:17R-13R Middle: Inside Track	18L-18R:12R-8R Middle:Middle Track	18L-18R:7R-3R Middle:Outside Track
Track Zone Ratio	8.67	1.97	1	1	1.97	8.67

