

STONE STREET



Oil Pattern Distance: 42 Feet **Reverse Brush Drop:** 42 Feet **Oil Per Board:** 40 uL
Forward Oil Total: 9.2 mL **Reverse Oil Total:** 9.32 mL **Volume Oil Total:** 18.52 mL
Forward Boards Crossed: 230 Boards **Reverse Boards Crossed:** 233 Boards **Total Boards Crossed:** 463 Boards

	Start	Stop	Loads	Speed	Crossed	Start	End	Feet	T.Oil
1	2L	2R	2	14	74	0.0	1.9	1.9	2960
2	9L	9R	1	14	23	1.9	3.8	1.9	920
3	10L	10R	2	18	42	3.8	8.9	5.1	1680
4	11L	11R	3	18	57	8.9	16.5	7.6	2280
5	12L	12R	2	18	34	16.5	21.6	5.1	1360
6	2L	2R	0	18	0	21.6	34.0	12.4	0
7	2L	2R	0	26	0	34.0	38.0	4.0	0
8	2L	2R	0	30	0	38.0	42.0	4.0	0

Navigation: Forward Reverse More

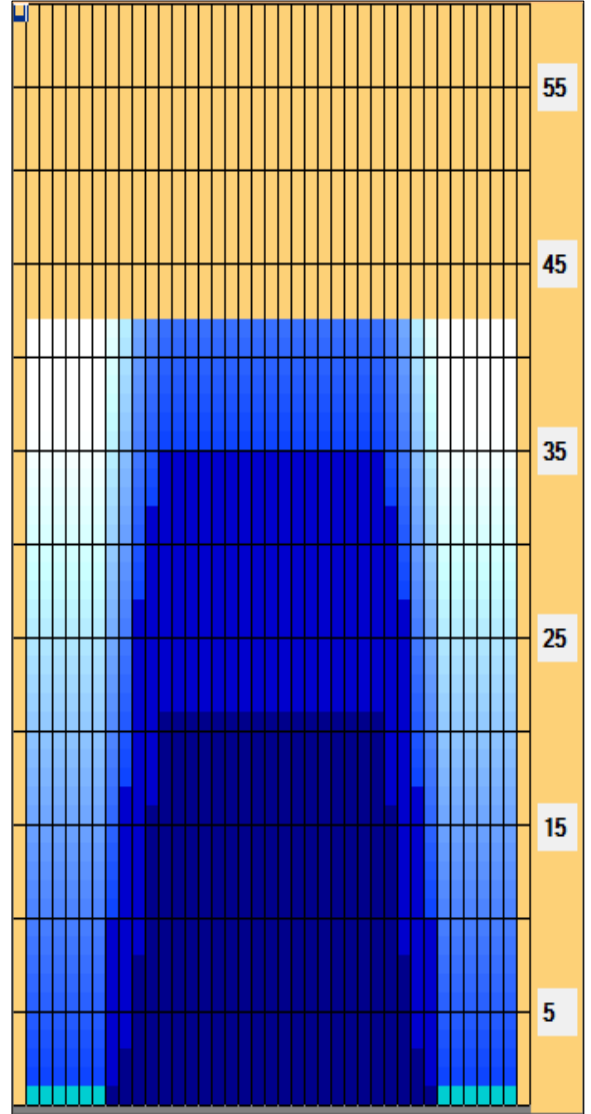
	Start	Stop	Loads	Speed	Crossed	Start	End	Feet	T.Oil
1	2L	2R	0	30	0	42.0	35.0	-7.0	0
2	12L	12R	1	18	17	35.0	32.5	-2.5	680
3	11L	11R	2	18	38	32.5	27.4	-5.1	1520
4	10L	10R	4	18	84	27.4	17.2	-10.2	3360
5	9L	9R	3	18	69	17.2	9.6	-7.6	2760
6	8L	8R	1	14	25	9.6	7.7	-1.9	1000
7	2L	2R	0	10	0	7.7	0.0	-7.7	0

Navigation: Forward Reverse More

Conditioner:
Type In or Select One

TransferType:
Type In or Select One

- Forward
- Reverse
- Combined
- Buff



Item Description	3L-7L:18L-18R Outside Track:Middle	8L-12L:18L-18R Middle Track:Middle	13L-17L:18L-18R Inside Track:Middle	18L-18R:17R-13R Middle: Inside Track	18L-18R:12R-8R Middle:Middle Track	18L-18R:7R-3R Middle:Outside Track
Track Zone Ratio	10.5	1.69	1	1	1.69	10.5

